



Powered by Dog - Delivered by

METALIMAGE®

Durable Images Delivered with Passion and Precision



What makes 1Tags the sustainable choice?

The sub-surface AliChroma imaging process is the key to our durability. Weather-proof, heat, solvent and scratch resistant images sealed in anodised aluminium. Exceptionally durable, widely specified, always readable.

- The image is embedded **in** the aluminium pore then sealed under a super-hard 24 micron anodic layer (Fig.1). No nasty protective plastics required.
- Hard-wearing 1.00mm or 1.50mm thick anodised aluminium. Our split rings are made right here in Aotearoa from high tensile spring steel wire protected by hard bright zinc, single or double turned for extra strength.
- To improve wear resistance a press fitted eyelet is essential protection, both 25 and 30mm tags have a generous 5mm lobe for years of frantic movement.
- Eliminate the jingle! Our Prototype SnappyTag wraps securely around the dogs collar so there is no movement, it won't get snagged and best of all - silent.
- In addition to your logo or text title we can include bar or QR codes along with the human readable registration number.
- Choice of seven base colours with silver mill finish rear ready for engraving.

Supplied in full sequence sheets, easy to store and handle the tags are super simple to pop out on demand. The skeleton goes direct to recycle.

- All components, including our upcycled packaging, are curb-side recyclable in support of carbon neutral projects.
- Manufactured in Aotearoa from imported aluminium. But we're keeping it local with design, product evolution, imaging and fabrication are all taken care of by our dedicated team in Tāmaki Makaurau.



References

Wellington City Council
Selwyn District Council
New Plymouth District Council
Queenstown Lakes District Council
Hutt City Council

Rotorua Lakes Council
Central Hawkes Bay District Council
Ashburton District Council
Christchurch City Council
Porirua City Council

<https://wellington.govt.nz/news-and-events/news-and-information/our-wellington/2021/05/one-tag>
<https://www.selwyn.govt.nz/services/dogs-And-animals/dogs/dog-registration/one-tag-dogs-lifetime-tag-in-selwyn>
<https://www.newline.ccc.govt.nz/news/story/new-single-use-registration-discs-for-dogs>
<https://www.thebreeze.co.nz/home/must-see/2021/05/city-councils-around-the-country-begin-to-replace-plastic-dog-ta.html>
<https://insidegovernment.co.nz/selwyn-council-takes-lead-with-nz-first-metal-dog-tags/>
<https://www.ashburtondc.govt.nz/news/2023-news/new-metal-dog-tags-proving-pup-ular>

AliChroma Performance Characteristics - 1100 SERIES ALLOY

Meets many DoD MIL spec requirements

Mil.spec. A.8625 A type II coating	Fed.Std. G.G. P.455B (10.7.1972) type II, class I (class II not standard) (3.5. - 3-7-1- t/m 3.10- 6.1 - 6.5.3.)	
Mil.spec. P.514C (15.s.1963) (3.2.1. + 3.2.2. Grade B)		
Mil.spec. P.514D (15.9.1966) (3.2.2. + 3.6.)		
Abrasive Resistance	Taber - Abraser with CS 17 wheel Load: 1000 gr. Cycles pro hr: 7000	SLIGHT DULLING
	Pighairbrush + water + talcum powder. Load: 1000 gr. Cycles pro hr: up to 24000	NO EFFECT
Temperature Resistance	500°C 300°C for 12 hrs	BLEACHING within 2 minutes. NO EFFECT
Salt spray	5% at 40°C for 700 hrs	NO EFFECT
Mil - S - 3136 Hydrocarbon Fluid	700 hrs immersion	
Mil - S - 5161 Turbine + Jet Engine fuel	700 hrs immersion	
Kerosene	700 hrs immersion	
Skydroll	700 hrs immersion	
Methyl Ethylketone	700 hrs immersion	
Ethyl acetate	700 hrs immersion	
Xylol	700 hrs immersion	
Heptane	700 hrs immersion	
Ethyl alcohol	700 hrs immersion	
Ferric chloride	10% solution 24 hrs	
Ammonium Hydroxide	10% solution 10 hrs	
Mil - P - 21563	Soap solution 16 hrs	
Mil - C - 25179 AIN in Heptane	25% solution, 1 min (cleaning solution)	
Sulphuric Acid	10% solution, 24 hrs	
Phosphoric Acid	1% solution, 12 hrs	
Nitric Acid	3% solution, 72 hrs	
TSP	1% solution, 40 hrs	



Content



FRONT
Printed Black
+
one background
colour.

REAR
Fibre mark
or
Engrave to
personalise.



Logo or Title

+
123456 +



Colours

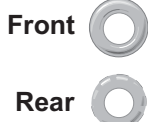
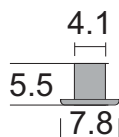


Due to the process of colouring
anodised aluminium colour may vary
slightly from sheet to sheet.

Grommets & Split Rings



Nickel Plated Brass.
Press fitted.



1.25mm

18mm



Single Turn

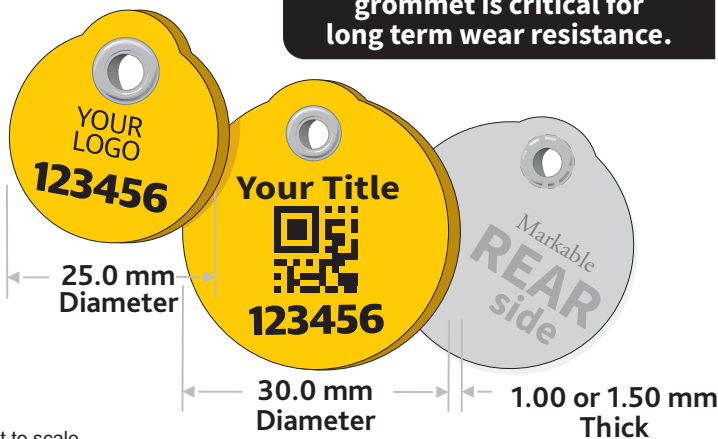
Double Turn

18mm Diameter Single or Double Turned Splitring
NZ Made 1.25mm Spring Steel Hard Bright Zinc

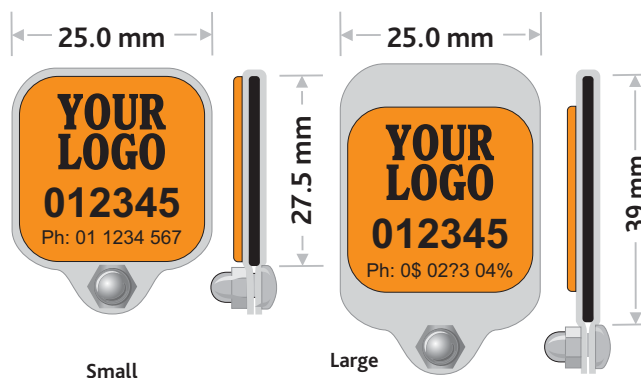
Tag Sizes & Styles

Classic Tag - A fitted
grommet is critical for
long term wear resistance.

Snappy Tag - Prototype Only
Something for the **strong, silent** types.
Clamps securely with no movement, and no sound.



Not to scale



Price list - GST not included. Aug 2024.

Product	Description	1 - 5,000	5,001 - 10,000	10,001 - 20,000	20,001 +
Small Tag - 1.00mm	25mm dia, fitted eyelet	\$1.64	\$1.46	\$1.34	\$1.29
Large Tag - 1.00mm	30mm dia, fitted eyelet	\$2.02	\$1.86	\$1.78	\$1.68
Small Tag - 1.50mm	25mm dia, fitted eyelet	\$1.98	\$1.88	\$1.81	\$1.69
Large Tag - 1.50mm	30mm dia, fitted eyelet	\$2.40	\$2.14	\$2.03	\$1.92
Small SnappyTag	Fits up to 27mm collar width. Fittings inc.	POA	POA	POA	POA
Large SnappyTag	Fits up to 39mm collar width. Fittings inc.	POA	POA	POA	POA

All sales are subject to the Metal Image Ltd standard terms and conditions as laid out on the website www.metalimage.co.nz.
Metal Image Ltd reserves the right to alter specifications and pricing. Aug 2024